



GAT MONTHLY MEMBERSHIP PROGRESS REPORT

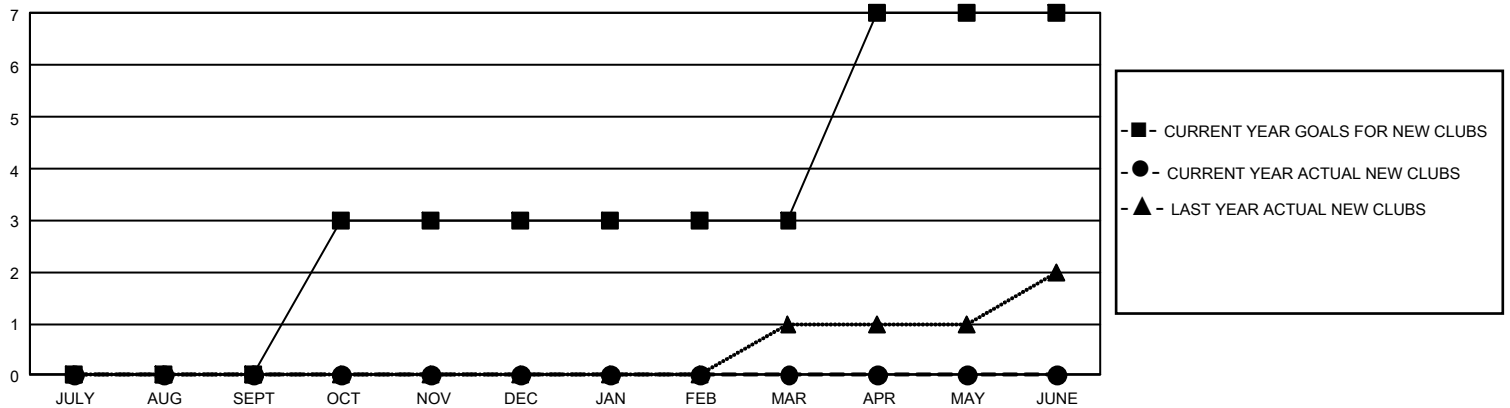
Results as of: 7/31/2025

GMT Constitutional Area 7, Group B

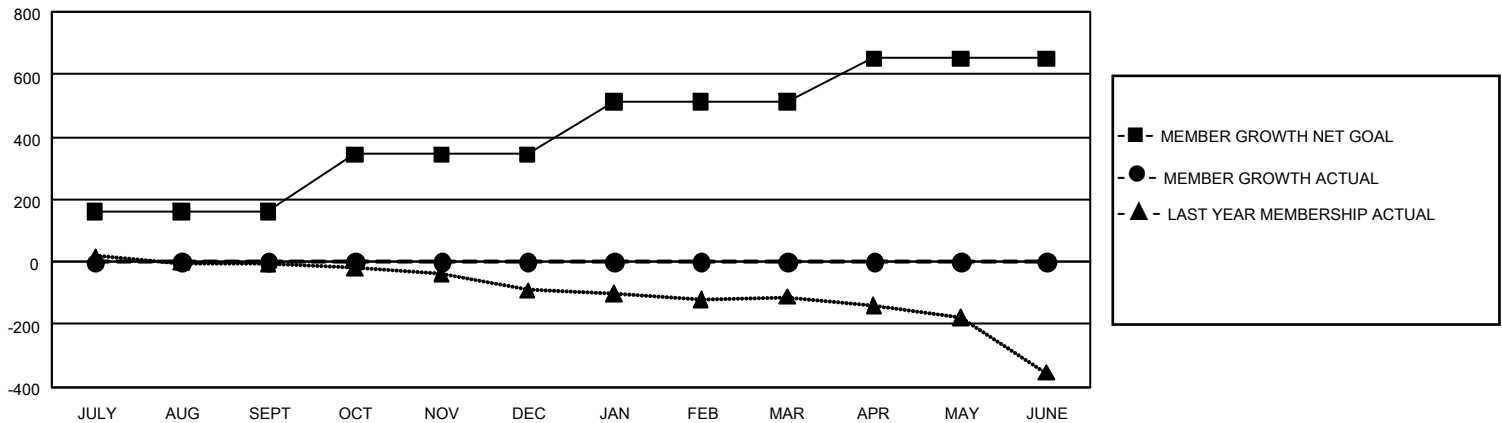
REPORT DOES NOT INCLUDE CLUBS IN UNDISTRICTED AREAS.

Clubs				Members			
RESULTS FOR 2025-2026				RESULTS FOR 2025-2026			
QUARTER	NEW CLUB GOAL	NEW CLUBS	DROPPED CLUBS	QUARTER	MEMBER GROWTH NET GOAL	MEMBER GROWTH ACTUAL	DROPPED MEMBERS ACTUAL (including transfers)
JULY/AUG/SEPT	0	0	1	JULY/AUG/SEPT	162	87	72
OCT/NOV/DEC	9	0	0	OCT/NOV/DEC	182	0	0
JAN/FEB/MAR	0	0	0	JAN/FEB/MAR	168	0	0
APR/MAY/JUNE	12	0	0	APR/MAY/JUNE	139	0	0

GOALS AND ACTUAL NEW CLUBS CUMULATIVE



GOALS AND ACTUAL MEMBERS CUMULATIVE



DROPPED CLUBS: 1		41 CLUBS OF 285 ADDED 1 OR MORE NEW MEMBERS	<u>GENDER DISTRIBUTION</u>	
<u>DROPPED MEMBERS</u> DECEASED 9 CLUB CANCELLED 1 OTHER 62 <hr/> TOTAL 72			MALE 4,910 (66.41%)	
			FEMALE 2,481 (33.56%)	
			NON BINARY 2 (0.03%)	
			PREFER NOT TO ANSWER 0 (0.00%)	
		CLICK HERE FOR CUMULATIVE MEMBERSHIP DATA	TOTAL FAMILY UNIT MEMBERS 753	
			FAMILY MEMBERS PAYING HALF DUES 379	